



The new degree of comfort.®



Residential Electric
Vertical & Horizontal Point
Of Use Water Heaters

Horizontal point-of-use water heaters feature a space saving design for installation replacement and new construction applications

Features

- Factory installed heavy-duty wall mounting bracket
- Over-temperature protector cuts off power in excess temperature situations
- Temperature indicator dial and power indicator light
- All connections are conveniently located in the same area for easy installation
- Maximum tank working pressure of 150 PSI (10 BARS)
- Factory tested @ 300 PSI (20 BARS)
- R-Foam® insulation for superior heat retention
- Factory installed pipe connectors
- 3/4" drain valve for faster tank drain and cleaning
- IEC certified, GSO compliant

Longer Life

- Rheem exclusive magnesium anode rod provides long-lasting tank protection
- Exclusive Rheemglas® tank lining resists corrosion and prolongs tank life

Plus...

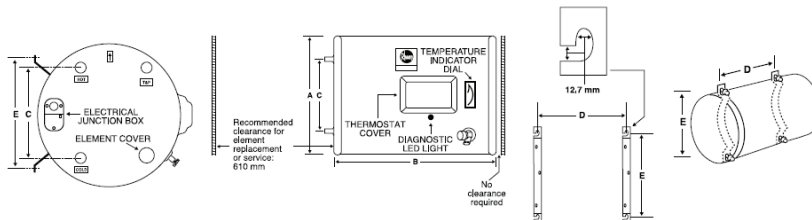
- ASME rated temperature and pressure relief valve included
- UL 174 construction: Tested and Listed
- LWD High efficiency INCOLOY 800 heating element to withstand various aggressive water conditions
- Wall mounting anchors and screws included.



MODEL NO.	WATTAGE
EP15H	1500, 2000, 3000 & 4500
EP20H	1500, 2000, 3000 & 4500
EP30H	1500, 2000, 3000 & 4500

Wall Mounted Horizontal Point-of-Use

15, 20 and 30 - gallon Capacities
230 & 240 Volt AC/Single Phase
50 Hz / 60 Hz



GAL. CAP.	MODEL NUMBER	CARTON DIMENSIONS L x W x H (mm)			A (mm)	B (mm)	C (mm)	D (mm)	E (mm)	INSULATION THICKNESS (mm)	UNIT WT. KG.	SHIPPING WT. KG.
15	EP15H	508	457	711	437	635	248	434	327	38	23	26
20	EP20H	508	457	889	437	813	248	610	327	38	26	29
30	EP30H	508	457	1194	437	1118	248	914	327	38	34	37

Wattage @ other voltages

$$\left(\frac{\text{Desired Voltage}}{230}\right)^2 \times (\text{Wattage @ 230 Volts})$$

Example: What is the wattage @ 220 Volts of a 230V, 3000 Watt water heater?

$$\left(\frac{220}{230}\right)^2 \times 3000 = 2745 \text{ Watts}$$

**Recovery = wattage / 2.42 x temp. rise °F.
 Example: $4500W = 21 \text{ GPH}$
 $2.42 \times 90^\circ$



SASO
الهيئة السعودية للمواصفات والمقاييس والجودة
Saudi Standards, Metrology and Quality Org.

الهيئة الفيدرالية للمواصفات والمقاييس
Emirates Authority for Standardization & Metrology

شارة المطابقة الخليجية
Gulf Conformity Mark

In keeping with its policy of continuous progress and product improvement, Rheem reserves the right to make changes without notice.

RMEA Manufacturing LLC
Onyx 2, Level P3, Offices 301-304
P.O. Box 371045, Dubai, UAE
www.rheem-mea.com



INTEGRATED HOME COMFORT