



ALL NEW

# PACKAGED REFRIGERATION SYSTEM

A single unit that houses everything  
needed to cool a space

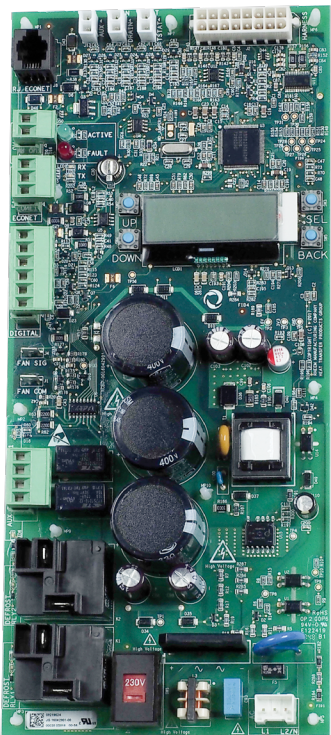


# PACKAGED REFRIGERATION SYSTEM

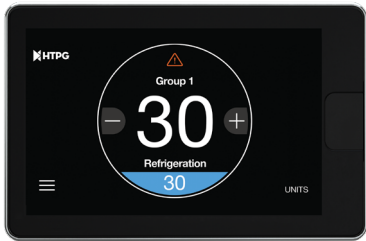
This DOE AWEF rated self-contained system comes in two sizes that satisfy low and medium temperature refrigeration needs and is ideal for holding applications. Once installed - either indoors or outside - setting up the unit is practically as easy as plugging it in. The system is EcoNet Enabled with Electronic Expansion Valve and can be operated with an optional Command Center from anywhere.

The Packaged Refrigeration System comes in 8 Scroll Compressor models & 2 Hermetic Compressor models. Our equipment is designed with the future in mind. We strive to incorporate sustainable solutions along with options and functionality that satisfy regulatory compliance. The Packaged Refrigeration System is easy to install and service. It's everything you need in one box.

## OPTIONAL ECONET COMMAND CENTER



Control Board



Command Center

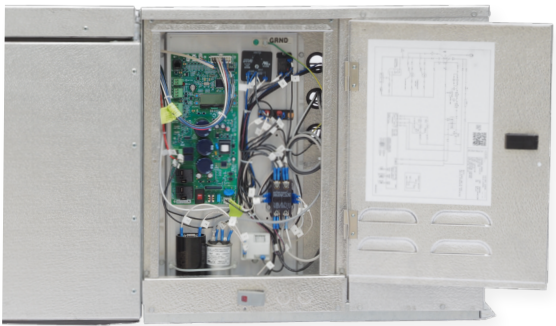
Using Rheem's SMART technology, the EcoNet Command Center can program, monitor, and troubleshoot equipment outside of the space being cooled. The Packaged Refrigeration System is already assembled with the EcoNet Control Board which analyzes and optimizes defrost cycles to provide a consistent temperature and extend the life of the unit.

By adding the optional Command Center, a Technician or Building Manager never has to step foot into the freezer in order to control temperature or maintain the equipment. Control up to 32 devices (including the Command Center) on one touchscreen.

BTUH

Medium Temperature // 4,790 to 15,830

Low Temperature // 3,790 to 15,130



- HIGHLIGHTS
- EcoNet Enabled to maximize energy efficiency with less compressor runtime
  - EcoNet optimizes defrost by using adaptive defrost or managing compressor runtime
  - EcoNet improves product quality by reducing temperature fluctuation
  - Available outdoor options include a Roof Kit and Hail Guard
  - Factory pre-charged with R-448A
  - One electrical wiring point with the ability to add a plug on select models
  - Boil-out pan is offered with an option of a PVC drain line connection
  - Lift-off panels & large electrical box

## MODEL NOMENCLATURE

|          |                               |                            |            |                       |             |                                  |          |
|----------|-------------------------------|----------------------------|------------|-----------------------|-------------|----------------------------------|----------|
| <b>H</b> | <b>P</b>                      | <b>H</b>                   | <b>050</b> | <b>M</b>              | <b>48</b>   | <b>A</b>                         | <b>A</b> |
| HTPG     | Product                       | Compressor                 | Horsepower | Temperature           | Refrigerant | Voltage                          | Vintage  |
|          | Packaged Refrigeration System |                            |            |                       | 48 = R-448A |                                  |          |
|          |                               | H = Hermetic<br>O = Scroll |            | M = Medium<br>L = Low |             | A = 115/1/60<br>D = 208-230/1/60 |          |



AIR DEFROST CAPACITIES // Medium Temperature

| Model       | AMBIENT TEMPERATURE |        |        |        |        |        |        |        |        |        |
|-------------|---------------------|--------|--------|--------|--------|--------|--------|--------|--------|--------|
|             | 80°                 | 90°    | 95°    | 100°   | 110°   |        |        |        |        |        |
|             | BOX TEMPERATURE     |        |        |        |        |        |        |        |        |        |
|             | 35°F                | 38°F   | 35°F   | 38°F   | 35°F   | 38°F   | 35°F   | 38°F   | 35°F   | 38°F   |
| HPH050M48*A | 5,960               | 6,290  | 5,550  | 5,870  | 5,360  | 5,670  | 5,170  | 5,470  | 4,790  | 5,090  |
| HPH055M48*A | 6,480               | 6,870  | 6,040  | 6,400  | 5,830  | 6,170  | 5,610  | 5,950  | 5,170  | 5,490  |
| HPO080M48*A | 8,200               | 8,600  | 7,750  | 8,120  | 7,530  | 7,890  | 7,310  | 7,660  | 6,850  | 7,180  |
| HPO100M48*A | 9,290               | 9,820  | 8,790  | 9,260  | 8,530  | 9,000  | 8,260  | 8,740  | 7,730  | 8,180  |
| HPO120M48*A | 11,900              | 12,480 | 11,250 | 11,800 | 10,910 | 11,460 | 10,590 | 11,110 | 9,870  | 10,390 |
| HPO150M48*A | 15,110              | 15,830 | 14,280 | 14,940 | 13,840 | 14,510 | 13,350 | 14,030 | 12,410 | 13,010 |

ELECTRIC DEFROST CAPACITIES // Low Temperature

|             | AMBIENT TEMPERATURE |        |        |        |        |        |        |        |       |
|-------------|---------------------|--------|--------|--------|--------|--------|--------|--------|-------|
|             | 80°                 |        |        | 90°    |        |        | 95°    |        |       |
|             | BOX TEMPERATURE     |        |        |        |        |        |        |        |       |
| Model       | 0°F                 | -10°F  | -20°F  | 0°F    | -10°F  | -20°F  | 0°F    | -10°F  | -20°F |
| HPO150L48*A | 7,030               | 5,790  | 4,630  | 6,640  | 5,460  | 4,360  | 6,440  | 5,290  | 4,210 |
| HPO250L48*A | 9,770               | 8,230  | 6,830  | 9,210  | 7,770  | 6,440  | 8,930  | 7,520  | 6,240 |
| HPO300L48*A | 13,550              | 11,340 | 9,340  | 12,810 | 10,730 | 8,830  | 12,440 | 10,400 | 8,570 |
| HPO350L48*A | 15,130              | 12,740 | 10,680 | 14,090 | 11,950 | 10,050 | 13,770 | 11,650 | 9,750 |

| Model       | 100°   |        |       | 110°   |        |       |
|-------------|--------|--------|-------|--------|--------|-------|
|             | 0°F    | -10°F  | -20°F | 0°F    | -10°F  | -20°F |
| HPO150L48*A | 6,230  | 5,110  | 4,070 | 5,810  | 4,650  | 3,790 |
| HPO250L48*A | 8,630  | 7,280  | 6,040 | 8,030  | 6,770  | 5,650 |
| HPO300L48*A | 12,040 | 10,070 | 8,290 | 11,210 | 9,370  | 7,720 |
| HPO350L48*A | 13,310 | 11,300 | 9,430 | 12,320 | 10,540 | 8,810 |

Asterix (\*) represents voltage. Please refer to Model Nomenclature on page 3 for additional breakdown

ELECTRICAL DATA

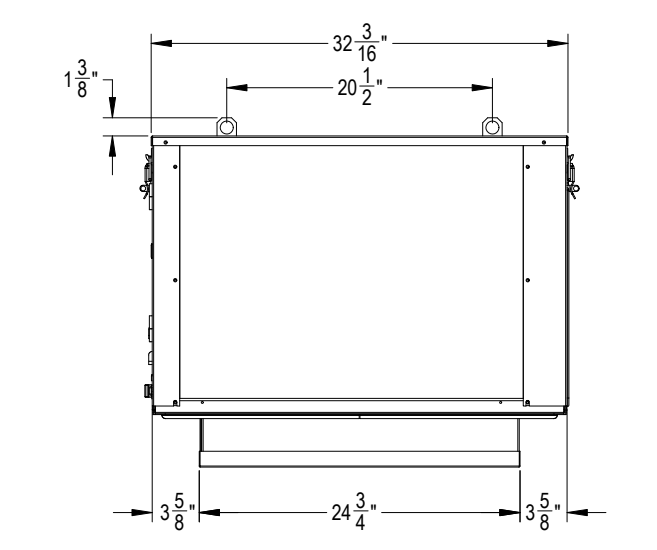
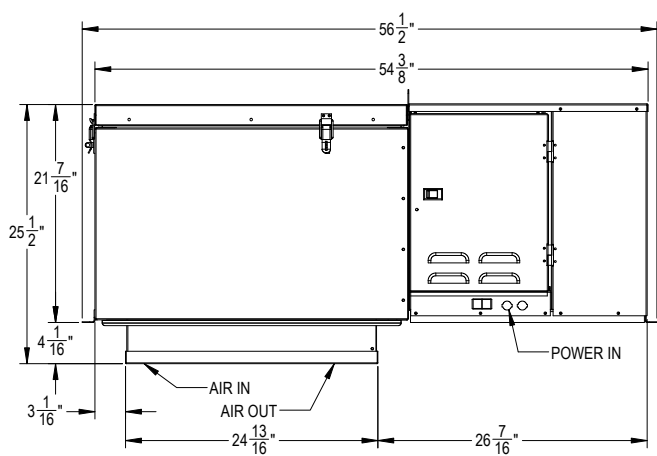
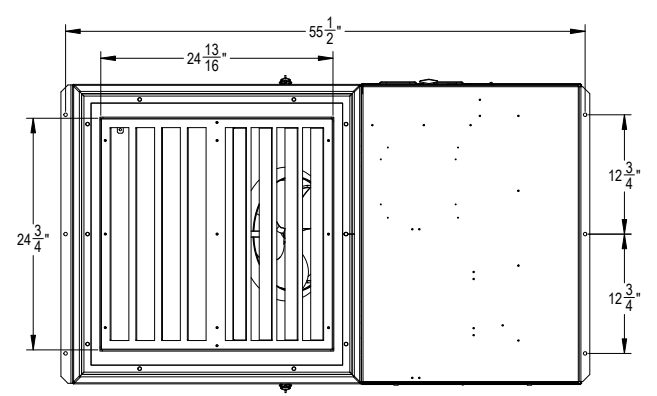
| Model       | Defrost Type | Voltage | MCA  | MOPD | Unit Amps |
|-------------|--------------|---------|------|------|-----------|
| HPH050M48AA | AIR          | 115     | 15   | 20   | 10.5      |
| HPH055M48AA | AIR          | 115     | 15   | 20   | 11.8      |
| HPO080M48AA | AIR          | 115     | 18.4 | 30   | 15.1      |
| HPO100M48AA | AIR          | 115     | 20   | 30   | 16.4      |
| HPO120M48AA | AIR          | 115     | 21.7 | 35   | 18.1      |
| HPH050M48DA | AIR          | 208     | 15   | 15   | 6.6       |
| HPH055M48DA | AIR          | 208     | 15   | 15   | 6.7       |
| HPO080M48DA | AIR          | 208     | 15   | 15   | 7.4       |
| HPO100M48DA | AIR          | 208     | 15   | 15   | 7.6       |
| HPO120M48DA | AIR          | 208     | 15   | 15   | 10.2      |
| HPO150M48DA | AIR          | 208     | 17.2 | 25   | 14.3      |
| HPO150L48DA | ELECTRIC     | 208     | 15   | 15   | 9.8       |
| HPO250L48DA | ELECTRIC     | 208     | 17.5 | 25   | 14.4      |
| HPO300L48DA | ELECTRIC     | 208     | 19.9 | 30   | 15.8      |
| HPO350L48DA | ELECTRIC     | 208     | 23.4 | 35   | 19.3      |

| Model       | U.C. CFM* | Plug Supplied? | Matching NEMA Receptacle | Cabinet Size | APX. NET WEIGHT |       | APX. SHIP WEIGHT |       |
|-------------|-----------|----------------|--------------------------|--------------|-----------------|-------|------------------|-------|
|             |           |                |                          |              | LB              | KG    | LB               | KG    |
| HPH050M48AA | 600       | KIT            | 5-20R                    | SMALL        | 206             | 93.4  | 286              | 129.7 |
| HPH055M48AA | 600       | KIT            | 5-20R                    | SMALL        | 206             | 93.4  | 286              | 129.7 |
| HPO080M48AA | 600       | KIT            | 5-20R                    | SMALL        | 206             | 93.4  | 286              | 129.7 |
| HPO100M48AA | 600       | NO KIT         | -                        | SMALL        | 206             | 93.4  | 286              | 129.7 |
| HPO120M48AA | 1200      | NO KIT         | -                        | LARGE        | 235             | 106.6 | 313              | 142   |
| HPH050M48DA | 600       | KIT            | 6-15R                    | SMALL        | 206             | 93.4  | 286              | 129.7 |
| HPH055M48DA | 600       | KIT            | 6-15R                    | SMALL        | 206             | 93.4  | 286              | 129.7 |
| HPO080M48DA | 600       | KIT            | 6-15R                    | SMALL        | 206             | 93.4  | 286              | 129.7 |
| HPO100M48DA | 600       | KIT            | 6-15R                    | SMALL        | 206             | 93.4  | 286              | 129.7 |
| HPO120M48DA | 1200      | KIT            | 6-15R                    | LARGE        | 235             | 106.6 | 313              | 142   |
| HPO150M48DA | 1200      | KIT            | 6-20R                    | LARGE        | 235             | 106.6 | 313              | 142   |
| HPO150L48DA | 600       | KIT            | 6-15R                    | SMALL        | 218.5           | 99.1  | 298.5            | 135.4 |
| HPO250L48DA | 600       | KIT            | 6-20R                    | SMALL        | 218.5           | 99.1  | 298.5            | 135.4 |
| HPO300L48DA | 1200      | NO KIT         | -                        | LARGE        | 264             | 119.7 | 342              | 155.1 |
| HPO350L48DA | 1200      | NO KIT         | -                        | LARGE        | 264             | 119.7 | 342              | 155.1 |

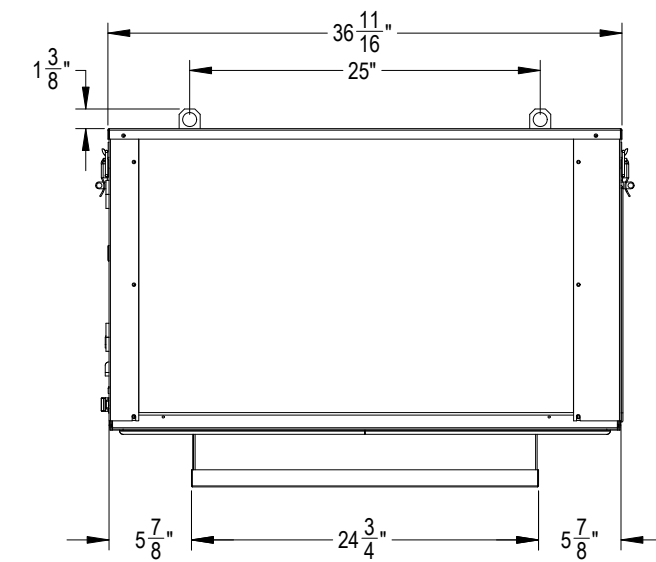
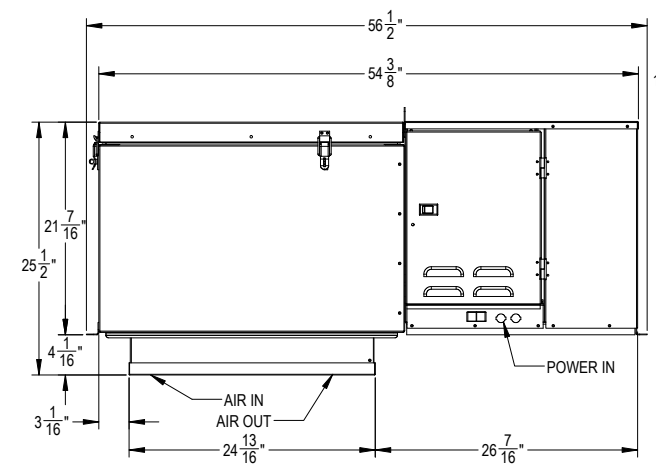
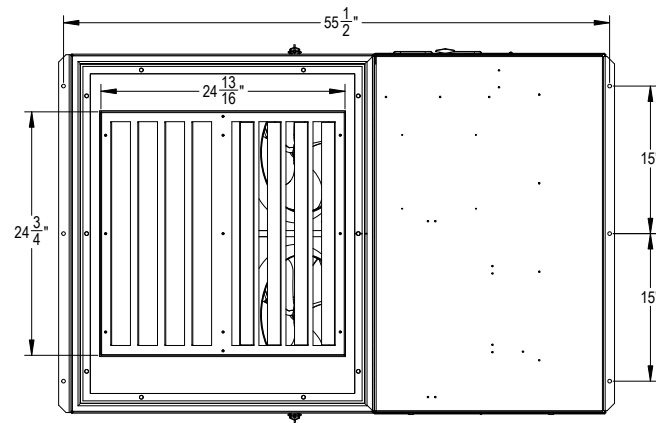
\*U.C. CFM = Unit Cooler Cubic Feet Per Minute

PHYSICAL DIMENSIONS

Small Cabinet



Large Cabinet



AWEF DATA

Medium Temperature

| Model       | INDOOR | OUTDOOR |
|-------------|--------|---------|
| HPH050M48*A | -      | -       |
| HPH055M48*A | -      | -       |
| HPO080M48*A | 5.61   | 7.6     |
| HPO100M48*A |        |         |
| HPO120M48*A |        |         |
| HPO150M48*A |        |         |

Low Temperature

| Model       | INDOOR | OUTDOOR |
|-------------|--------|---------|
| HPO150L48*A | 2.17   | 3.15    |
| HPO250L48*A |        |         |
| HPO300L48*A |        |         |
| HPO350L48*A |        |         |

Asterix (\*) represents voltage. Please refer to Model Nomenclature on page 3 for additional breakdown

NOTES

- If the Medium Temperature model has a numerical value in the table above, the following statement applies: "This refrigeration system is designed and certified for use in walk-in cooler applications
- If the Low Temperature model has a numerical value in the table above, the following statement applies: "This refrigeration system is designed and certified for use in walk-in freezer applications.

Due to continuing product development, specifications are subject to change without notice.



**ColdZone.HTPG.com**

©2023 Heat Transfer Products Group  
Published March 2023  
2303TBPRS